

# BOROUGH SERVICES SCHEDULE

JANUARY ~ JUNE 2014

RECYCLING AND YARD WASTE CANS ARE AVAILABLE AT THE BOROUGH OFFICE FOR A COST OF \$13.00 EACH.

Month	PLACE YARD WASTE CONTAINERS OUT BY 7AM ON MONDAY OF THE FOLLOWING WEEKS:
January 2014	20th - weather permitting
February	17th - weather permitting
March	24th
April	21st
May	19th
June	23rd

## YARDWASTE COLLECTION Yard Waste Guidelines

- Different trucks collect various types of yard waste and not always at the same time. Therefore, yard waste must be placed in your regular refuse collection area by **7am on Monday morning** to be collected sometime that week
- No bags or boxes will be accepted – only open containers.
- Yard waste containers may not have lids and must be marked with the complete word “yard waste” in large letters on all sides of the can.
- All yard waste containers must have drainage holes in the bottom of the can and hand holds.
- Limbs 1”-12” in diameter must be neatly stacked in the regular refuse collection area with cut ends facing one direction towards the street or alley
- Plants, twigs, and any bush trimmings smaller than 1” diameter, must be put in open containers not exceeding 45 pounds, or, bound together in

bundles not exceeding 4-feet in length or 45-pounds in weight using cotton or sisal twine only. **Bagged items and unbound loose piles will not be picked up!**

- Tree stumps or branches larger than 12” in diameter may be placed for collection, but will be picked up separately from the other yard waste.
- The Borough does not collect grass clippings.
- **Pumpkins, gourds, hay bales, and other vegetation used for seasonal decorations will be collected as yard waste.**

## RECYCLING COLLECTION ~ EVERY WEEK

Place recycling cans out for collection not before dusk of the day before your collection and not after 7 AM of the day of collection.

Holiday Refuse/Recycling Schedule (Subject to change):

Holiday on Monday = Tuesday is collection day      Holiday on Tuesday = Wednesday is collection day  
 Holiday on Wednesday = Thursday is collection day      Holiday on Thursday = Friday is collection day  
 Holiday on Friday = Thursday (prior to holiday) is collection day

## COLLECTION OF CHRISTMAS TREES & OTHER EVERGREEN DECORATIONS

All Christmas trees and other evergreen decorations will be collected the entire month of January on the scheduled refuse day (weather and equipment permitting). All materials (e.g., ribbons, decorations, tree stands, nails, wire, etc.) must be removed from the greens.

## SPRING LEAF COLLECTION ~ March 10 through 14 & April 7 through 11

Leaves are collected curbside. Leaves will not be collected from any alleys. No limbs, grass, or yard waste may be mixed in with the leaves. All leaves for collection must be placed curbside by **7 AM Monday morning** for collection sometime during that week.

## STREET SWEEPING ~ Begins the month of April & ends in October

Street sweeping will start the first weekday of every month for a one week period of time.

Winter 2014



*Working Together for a Common Cause - a Better Community!*

# Our Town News

## New Palmyra Municipal Building

Borough of Palmyra  
325 S. Railroad Street  
Palmyra, PA 17078

Ph: 717-838-6361  
Fax: 717-838-1051

Office Hours:  
M-F 8 am - 4:30 pm

Visit us on the web at:  
[palmyraborough.org](http://palmyraborough.org)

### Borough Council

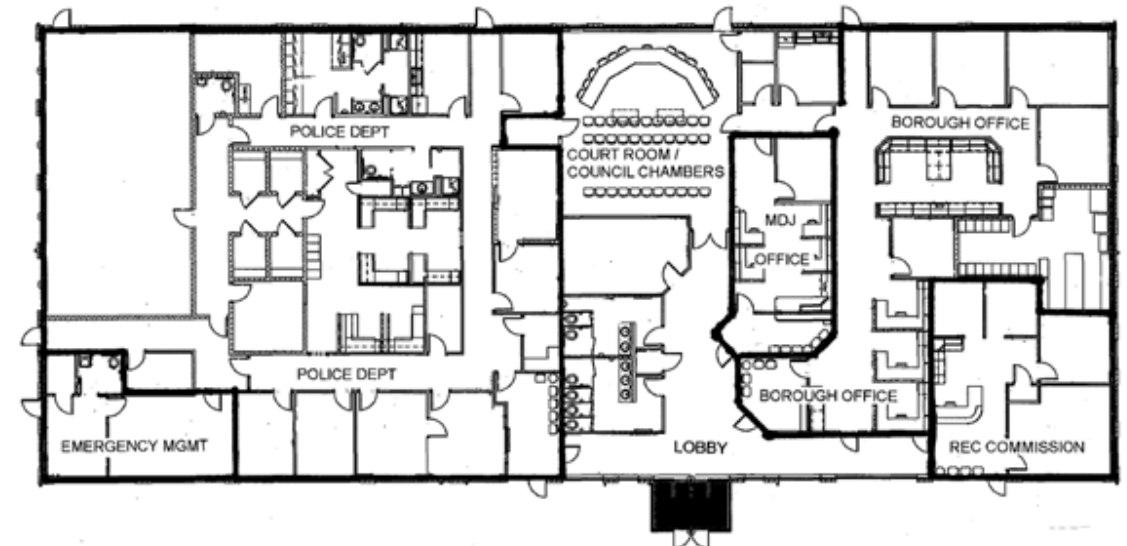
- Pat Hennessy
- Gary Laudermilch
- Scott Mazzocca
- Leon Nissley
- Jane Quairol
- Beth Shearer
- Joe Templin

### Mayor

- Fred Carpenter

### Borough Management

- Roger Powl, Borough Mgr
- Brenda Pera, Asst Borough Mgr
- Scott Plouse, Public Works Superintendent
- Stan Jasinski, Police Chief
- James Hunt, Lieutenant



On June 26, 2013, Borough Council held a ground breaking ceremony to mark the construction of the new municipal building, which is being built next to the current Municipal Center. The new building will be the home for the Borough Administration Office, the Palmyra Police Department, Palmyra Area Recreation and Parks Commission, the Western Lebanon County Emergency Management Agency, and the Magisterial District Justice Office.

The Palmyra Area Public Library will be temporarily relocating to 50 Landings Drive in South Londonderry Township. Once the current Municipal Center is demolished, the remaining property will have a new parking lot constructed, and will be subdivided in order to provide a building lot for both the Library and the Citizen's Fire Company #1 to each build a new building of their own. The intent is to create a campus type setting for municipal services.

The building has taken shape and the current construction schedule is projecting a move date near the end of January or the beginning of February 2014. It is anticipated that the Borough Office will be closed for approximately one week to facilitate the move to the new office. The Borough is mindful of the need for our residents to access services and is working to minimize any inconvenience to the residents during our planned move and through the project's completion. We ask for your patience as we transition to the new municipal building.

## **BOROUGH COUNCIL APPROVES FLAT SEWER RATE FOR RESIDENTIAL CUSTOMERS**

In December 2013, Borough Council passed Ordinance #754 authorizing all residential customers to pay a flat rate of \$70 per quarter for sewer service. Effective January 1, 2014, all residential units will pay \$70 per quarter per unit regardless of the amount of water used. Commercial & Industrial users will continue to be billed according to their metered water usage.

## **YARD WASTE AND RECYCLE CONTAINERS FOR SALE**

The Borough has purchased new containers for recycling and yard waste. The recycling containers are 25 gallons and blue in color. The yard waste containers are also 25 gallons and are bright yellow in color. The containers will be sold for \$13.00 each and are available at the Borough office. Residents are permitted to continue using the green recycling containers as well as your current yard waste containers provided they meet the following requirements: Containers may not exceed 33 gal. or 45 lbs., must have handles and drainage holes, and no lids. No bags or cardboard boxes are permitted.

## **PAYING YOUR SEWER/REFUSE BILL**

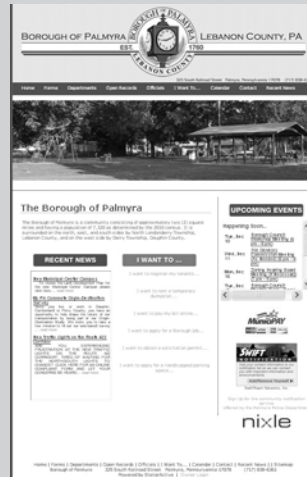
The most important component to paying your sewer/refuse bill is to make your payment on time. Invoices are mailed to property owners at the beginning of every quarter (January 1st, April 1st, July 1st, and October 1st). Payment for the full amount is due 30 days from the billing date on the invoice. Property owners that do not make full payment prior to the thirty (30) days will incur a 1.5% penalty on the unpaid balance. All sewer/refuse balances not paid within sixty (60) days will incur a 6% penalty on the unpaid balance.

All residents that are having difficulties in meeting their quarterly payments are advised to contact the Borough office to discuss payment arrangements. The Borough will work with our residents to help create a payment plan that will work to repay any arrearage.

The Borough is authorized to place municipal liens against property with delinquent balances. In addition, Borough Council has authorized staff to work with the PA American Water Company to shut off water service to delinquent properties. Residents will incur additional costs if the Borough takes steps to discontinue water service. We encourage any resident with a delinquent balance to call immediately.

## **BOROUGH UNVEILS A NEW WEBSITE**

*The Borough's website is new and improved. A section called "I Want To..." was created to address the most frequently asked questions. Go to [www.palmyraborough.org](http://www.palmyraborough.org) and take a look.*



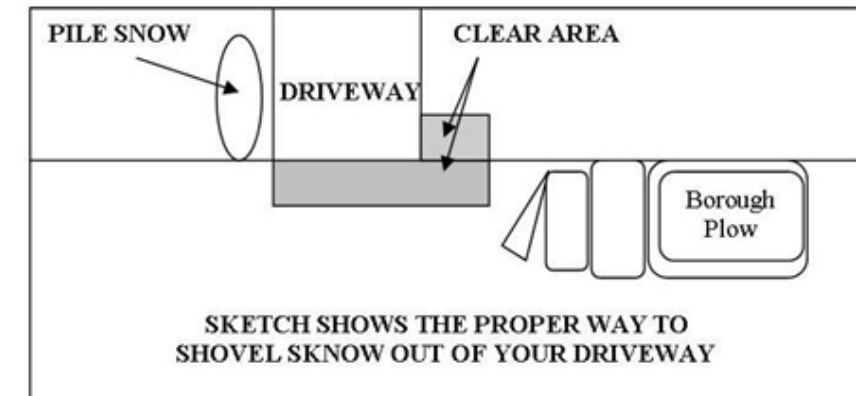
*Let us know how you like the new site.*

### ***The Borough office will be closed on the following dates:***

January 1, 2014	New Year's Day
January 20, 2014	Martin Luther King Day
February 17, 2014	President's Day
May 26, 2014	Memorial Day

***Please contact the Borough office at  
(717) 838-6361 if you have any questions.***

## **RULES FOR THE REMOVAL OF SNOW AND ICE FROM SIDEWALKS**



There is no doubt that the winter months will bring winter weather. Before the next snow or ice event, please read and understand the rules for snow and ice removal from sidewalks. The requirements are as follows:

- The owner of any lot containing, fronting on or abutting on an improved sidewalk shall remove and clear away or cause to be removed and cleared away snow and/or ice from a path at least 36 inches in width from so much of said sidewalk as is within, in front of or abuts the lot.
- Snow and ice shall be removed from sidewalks within 24 hours after the cessation of any fall of snow, sleet or freezing rain.
- In the event snow and/or ice on a sidewalk has become so hard that it cannot be removed without likelihood of damage to the sidewalk, the person charged with its removal shall, within the 24 hours mentioned previously, cause enough sand or other abrasive to be put on the sidewalk to make travel reasonably safe. Said person shall, as soon thereafter as weather permits, clear or cause to be cleared a path in said sidewalk of at least 36 inches in width.
- The owner of any building or other structure shall remove and clear away, or cause to be removed and cleared away any accumulation of snow and/or ice on said building or other structure which is liable to fall on any sidewalk, street, highway or other public way. Such work shall be completed within a reasonable time, but not later than 24 hours after the cessation of any fall of snow, sleet or freezing rain.
- No person shall deposit or cause to be deposited any snow or ice on to neighboring properties without the express consent of the neighboring property owner or immediately next to a fire hydrant or on any sidewalk, street or highway or loading or unloading areas of a public transportation system, except that snow or ice may be mounded by the Borough on public cart-ways incident to the cleaning thereof or mounded on curbs incident to the cleaning of sidewalks in the business district.

***Borough Council has empowered the Palmyra Police Department with the enforcement of this ordinance. Any person who violates any provision of this ordinance shall be sentenced to pay a fine of not less than \$75 nor more than \$600 plus costs. Each day that a violation continues shall be considered a separate offense.***