

Borough Services Schedule

October - December 2017

YARDWASTE COLLECTION

| Month | PLACE YARD WASTE CONTAINERS OUT BY 7AM ON MONDAY OF THE FOLLOWING WEEKS: |
|---------------|--|
| October | 23rd |
| November | 27th |
| December | 18th - weather permitting |
| January 2018 | 22nd - weather permitting |
| February 2018 | 26th - weather permitting |
| March 2018 | 26th |

Yard Waste Guidelines

- Different trucks collect various types of yard waste and not always at the same time. Therefore, yard waste must be placed in your regular refuse collection area by 7am on Monday morning to be collected sometime that week
- No bags or boxes will be accepted – only open containers not exceeding 33-gallons in size
- Yard waste containers may not have lids and must be marked with the complete word “yard waste” in large letters on all sides of the can.
- All yard waste containers must have drainage holes in the bottom of the can and handles of adequate strength for lifting.
- Limbs 1”-12” in diameter and in excess of 4 ft. must be neatly stacked in the regular refuse collection area with cut ends facing one direction towards the street or alley
- Plants, twigs, and any bush trimmings smaller than 1” diameter, must be placed in open containers not exceeding 45-pounds, or, bound together in bundles not exceeding 4-feet in length or 45-pounds in weight using cotton or sisal twine only. **Bagged items and unbound loose piles will not be picked-up!**
- Tree stumps or branches larger than 12” in diameter may be placed for collection, but will be picked up separately from the other yard waste
- The Borough does not collect grass clippings
- Pumpkins, gourds, hay bales, and other vegetation used for seasonal decorations will be collected as yard waste.

FALL LEAF COLLECTION ~ BEGINS OCTOBER 1ST THROUGH END OF SEASON

Leaves are collected curbside. All leaves for collection must be placed curbside by 7 AM Monday morning for collection sometime during that week. Leaves will not be collected from any alleys.

PLEASE NOTE: Any items not at the appropriate pick-up location by the described time will be missed.

YARD WASTE AND RECYCLING CONTAINERS ARE AVAILABE FOR PURCHASE AT THE BOROUGH OFFICE. THE COST IS \$13 EACH FOR A 20 GALLON CONTAINER.

Please contact the Borough office at (717) 838-6361 if you have any questions.

Fall 2017



Working Together for a Common Cause - a Better Community!

Our Town News

CROSSING GUARDS NEEDED

Looking for that part-time position that will allow you to have summers off? The Palmyra Police Department has several openings for school crossing guards. The primary responsibility of an adult school crossing guard is to help children safely cross the street as they walk to and from school.

A school crossing guard can help to accomplish the following goals:



- Discourage children from behaving unsafely near traffic, such as darting into the street without looking or crossing against a traffic signal. A guard can encourage safe behavior by all pedestrians at the school crossing.
- Use existing gaps in traffic to help students cross safely. When the natural traffic flow does not allow enough time for children to safely cross a street, a guard may need to create gaps by stopping traffic temporarily. The guard stops traffic with hand signals or a STOP paddle, then verbally directs children to cross the street. A guard is always the first person in the street and the last person out of the street.
- Alert motorists that pedestrians are in the process of using the school crossing.
- Observe and report any incidents or conditions that present a potential safety hazard to the school children or the guard.

This is a paid position within the Palmyra Police Department. Crossing guards earn \$11.69 per hour. Interested candidates must be able to promote positive interactions with school children, enforce crosswalk rules, be able to stand for long periods of time outdoors and to communicate well with others.

Questions?? Please contact the Palmyra Police Department at 717-838-8188 from 8:00 AM to 4:00 PM Monday through Friday.

MEDICINE DROP BOX

The Palmyra Borough Police Chief Stanley Jasinski, recently removed the medicine collection box from the Palmyra Police Department waiting room. His decision was based upon changes in the Lebanon County policy for collection of the contents and his perception of a medicine smell emanating from the box that could be unsafe to police personnel.

Both North Londonderry and South Londonderry Townships have drop boxes available for any resident wishing to dispose of pharmaceuticals. The boxes are available in each police department.

Borough of Palmyra
325 S. Railroad Street
Palmyra, PA 17078

Ph: 717-838-6361
Fax: 717-838-1051

Office Hours:
M-F 8 am - 4:30 pm

Visit us on the web at:
palmyraborough.org

Borough Council

- Mark Smith, President
- Beth Shearer, Vice President
- Brian Craig
- Josh Holl
- Carissa Mellinger
- Jane Quairol
- Joe Templin

Mayor

- Fred Carpenter

Borough Management

- Roger Powl, Borough Mgr
- Brenda Pera, Asst Borough Mgr

Codes Enforcement

- Michelle Bowman

Public Works

- Scott Plouse, Superintendent

Police

- Stan Jasinski, Police Chief



TRICK OR TREAT

Borough Council has announced Trick or Treat Night to be held on:

**Tuesday, October 31, 2017
from 6:00 PM to 8:00 PM**

The rain date has been set for Wednesday, November 1, 2017.

CHRISTMAS PARADE

The Palmyra Area Heritage Association (PAHA) has announced that the 2017 Palmyra Christmas parade will be held on:

Saturday, November 11, 2017

The parade will start at Noon beginning at S. Railroad and E. Maple Streets.

The parade route will continue east on Maple Street to Green Street, north on Green Street to Main Street, west on Main Street to Horstick Street, and south on Horstick Street to the Palmyra Middle School.



REFUSE COLLECTION REMINDER

- The collection limit for refuse is three 33-gallon bags/cans and one oversized item per week. Any resident that has more than three bags/can per week will need to obtain extra bag/can in the amount of \$2.00 per tag. Oversized items in excess of the one allowable item per week will require a \$5.00 large item tag. These tags may be obtained at the Borough office.
- Refuse containers must be placed in the proper collection area by 7 AM on the day of collection. Bags/cans must be removed from can corrals and placed at the edge of the alley for collection. Borough personnel is not authorized to either enter private property or remove bags/cans from a corral.
- Residents are advised that recycling must be placed in the proper recycling container for collection. Any recycling determined to be mixed in with refuse will require our personnel to leave the bag/can behind and place an orange sticker on the bag/can outlining the reasons it was not collected.
- No grass clippings are allowed in the refuse to be mixed in with refuse.
- Any container that is damaged beyond useful life must be replaced.
- Drainage holes must be in the bottom of the containers.

Holiday Refuse/Recycling Schedule (Subject to change):

Holiday on Monday = Tuesday refuse/recycling collection day

Holiday on Tuesday = Wednesday refuse/recycling collection day

Holiday on Wednesday = Thursday refuse/recycling collection day

Holiday on Thursday = Friday refuse/recycling collection day

Holiday on Friday = Thursday (prior to holiday) collection day

Borough Holidays

October 9, 2017 – Columbus Day

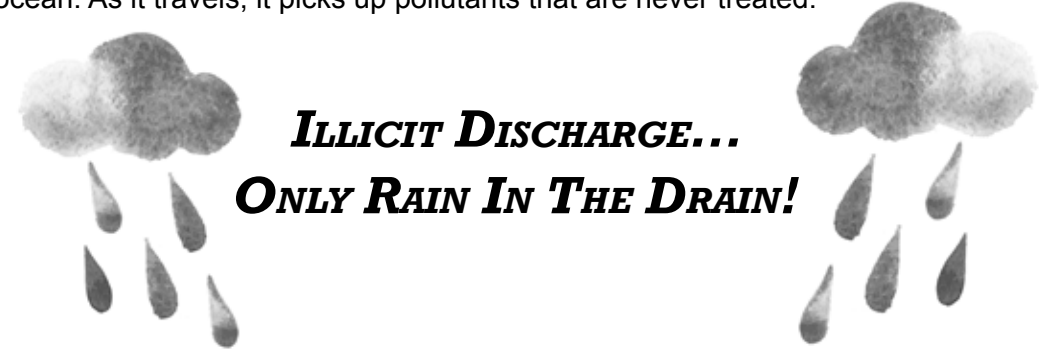
November 10, 2017 – Veteran's Day

November 23, 2017 – Thanksgiving Day

December 25, 2017 – Christmas Day

January 1, 2017 – New Years Day

Did You Know? A wastewater (sewer) system and a storm drain system are not the same — they are completely different systems. When you wash your dishes, take a shower, or flush your toilet, that water from your home flows into a wastewater treatment plant where it is treated and filtered. However, the water that flows off your driveway and yard, into the street, and down a storm drain directly flows to a stream, lake, river, or ocean. As it travels, it picks up pollutants that are never treated.



What is an Illicit Discharge?

An illicit discharge is the discharge of any substance that is not stormwater into a stormwater system. The discharge can occur via overland flow or direct dumping of materials into a catch basin. Not only is this bad for our environment, but putting materials into a stormwater system is illegal.

Why is Illicit Discharge a Concern?

Illicit discharge is a problem because stormwater flows directly into our local waterways. Unlike wastewater from your home, which flows to a wastewater treatment plant for treatment prior to discharge, stormwater does not receive any additional treatment. Illicit discharges can dump chemicals, nutrients, and other toxic pollutants into our creeks, streams, and rivers.

Examples of Illicit Discharge

Illicit discharge can be an unintentional situation or an intentional dumping that allows pollutants into the stormwater system. Examples of illicit discharge include:

- Dumping motor oil, paint, or other household hazardous waste into a catch basin.
- Allowing wash water from a car wash to enter a storm drain.
- Connecting basement drains to stormwater systems.
- Placing lawn clippings or other yard waste into a stormwater system or in a location that can carry it into a stormwater system during a storm.
- Leaving spilled contaminants, such as oil or gasoline, on pavement so that it washes into the stormwater system during a subsequent rain event.

What Can You Do?

We should do everything possible to protect and preserve our ground and surface water quality. We can all make a difference by taking a few simple steps:

- Check with your municipality and county for household hazardous waste drop-off locations and times.
- Volunteer to help your municipality prevent dumping into stormwater drains by marking them.
- Clean up spills on pavement as soon as possible using cat litter or other absorbent material.
- Read chemical labels and purchase non-hazardous options whenever possible.
- Contact your local municipality if you observe illegal dumping/illicit discharge, or if you see anyone pouring something into a storm drain inlet, ditch, or stream.
- Never place yard waste near a stormwater system, including along a back property line, along a stream bank, in the woods, or in another off-road area